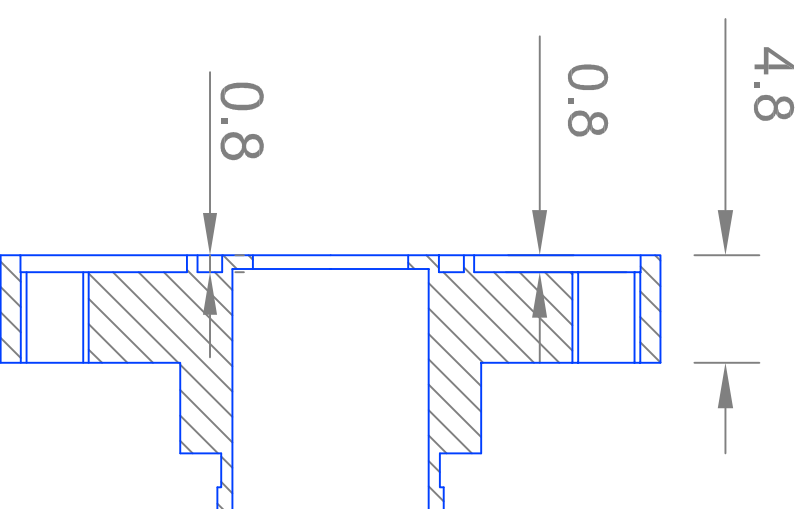
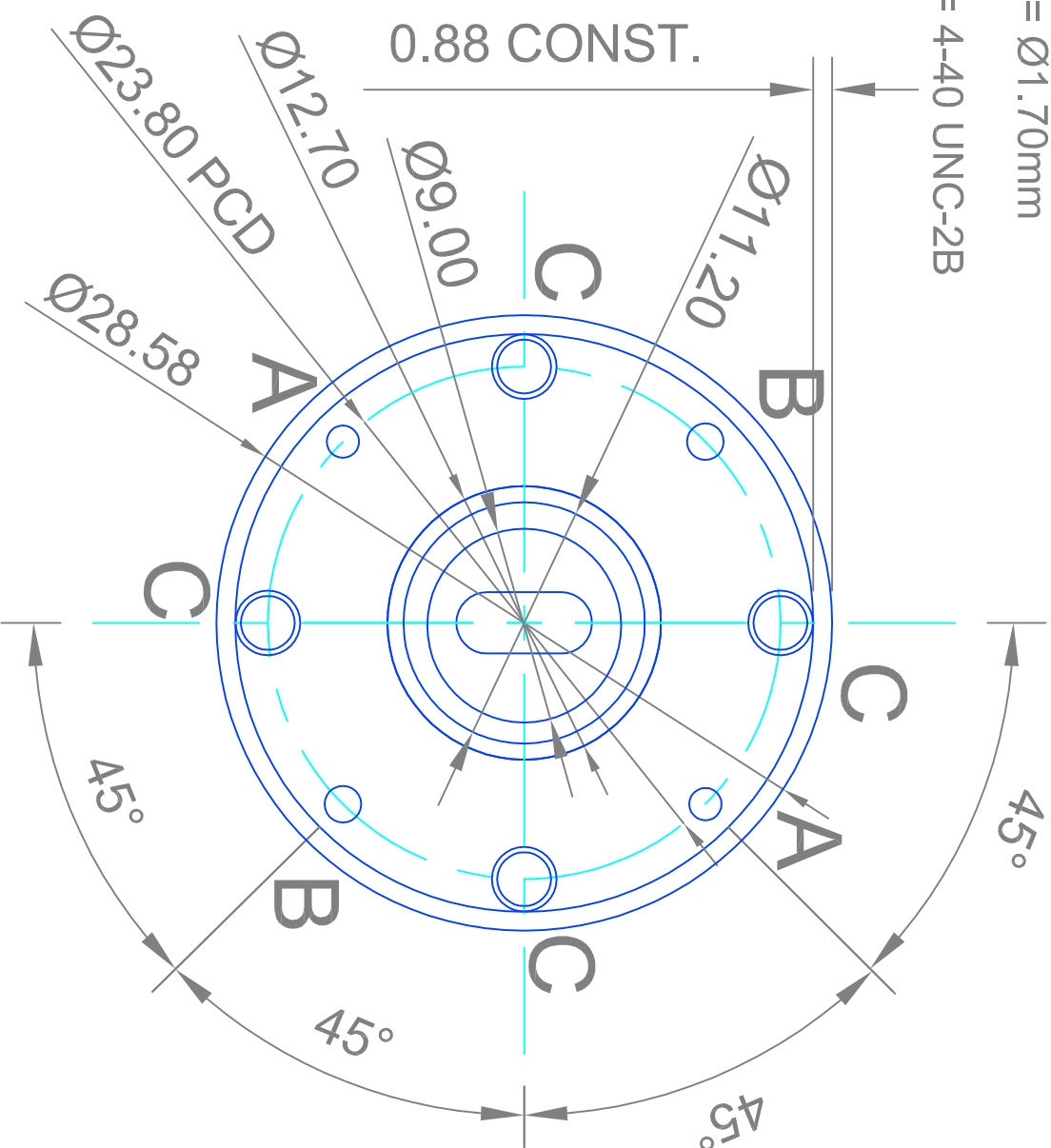


A = $\varnothing 1.5\text{mm}$
 (TO ACCEPT PRESS FIT
 $\varnothing 1.5\text{mm}$ DOWEL PIN)

B = $\varnothing 1.70\text{mm}$

C = 4-40 UNC-2B

Flexiguide Ltd
 World Leaders in Flexible Waveguide Technology



WG23
 WR22
 R400

INTERNATIONAL
 DESIGNATION

UG-383B/U MODIFIED

FLEXIGUIDE
 FLANGE CODE

23Y

v1.0